



Project By:



SITE ADDRESS:
Market plot, RSC-15, Survey no 263(pt.),
MHADA Layout, Malwani, Malad (West), Mumbai

CORPORATE OFFICE:
305, Goyal Shopping Centre, S.V. Road, Opp Railway Station,
Borivali (W), Mumbai - 400092
Tel : 022-28952344 / 022-28902641

Email : info@florenceheights.in
Website : www.florenceheights.in

OUR RENOWNED PANEL:

Architect
M/s. Space Moulders

RCC Consultant
M/s. Desai & Associates

Legal Advisor
M/s. Kirti Nagda and Associates



Scan QR for Location

The project is registered under MahaRera Registration No: **P51800049192**
And is available on website <http://maharera.mahaonline.gov.in/> under registered projects.

*T&C apply. The name Florence Heights is used for promotional purpose only. This brochure is not a legal document and does not constitute an offer or contract of any nature whatsoever between the Promoter/Developer and the recipient. All rendered visuals, images, plans and maps are artist's conceptions meant for illustration purpose only, unless otherwise mentioned. Location map, distance are approximate and not to scale, it's only for better understanding. All colors, furniture, fittings shown are aesthetic representation purpose only and are not part of the flat offer for sale, it only describes a conceptual plan to convey the intent and purpose of the Promoter/Developer. The details mentioned in the brochure are tentative and subject to approval. The Promoter/ Developer reserves the right of modify and vary the detail mentioned herein at its sole discretion. The Promoter/ developer does not warrant or assume any legal liability for the accuracy, completeness or usefulness of any information disclosed. Government & other charges as applicable. For more details call our representative.

Designed By : www.chamk.in





A tower designed keeping your refined tastes and eye for detail in mind, Florence Heights welcomes you to experience indulgence of the highest order. Step into this 16-storey edifice that will be your oasis within the city. This pristine tower is designed with ambition and is located in a happening locality that will help you lead a rewarding and fulfilling life.

Florence Heights is your opportunity to join the cream of the society. This stellar tower gives you affordable Housing with 1&2 BHK apartments spread across 2 wings. The advanced architecture here allows 2 flats to be merged into a Jodi home. Over 160 happy families will comprise the thriving community here at Florence Heights. Combining lavish amenities with superior connectivity, this tower is truly a home for those who expect more from life.

Florence Heights is a new landmark built for the discerning few. This RERA registered project serves multiple space and budgetary requirements while not compromising on the top-notch amenities.

External Amenities:

- RCC Frame Structure, Earthquake & Wind Resistant Design.
- Attractive Entrance Lobby.
- Mechanised Stack Parking on Podium.
- 2 High Speed Elevators in each wing .
- Advance Secure Fire Fighting System.
- Integrated Security System.
- Durable Weather Proof Exterior Emulsion Paint For Long Lasting Finish.
- Special water proofing treatments to terraces.
- Decorative Compound Wall.



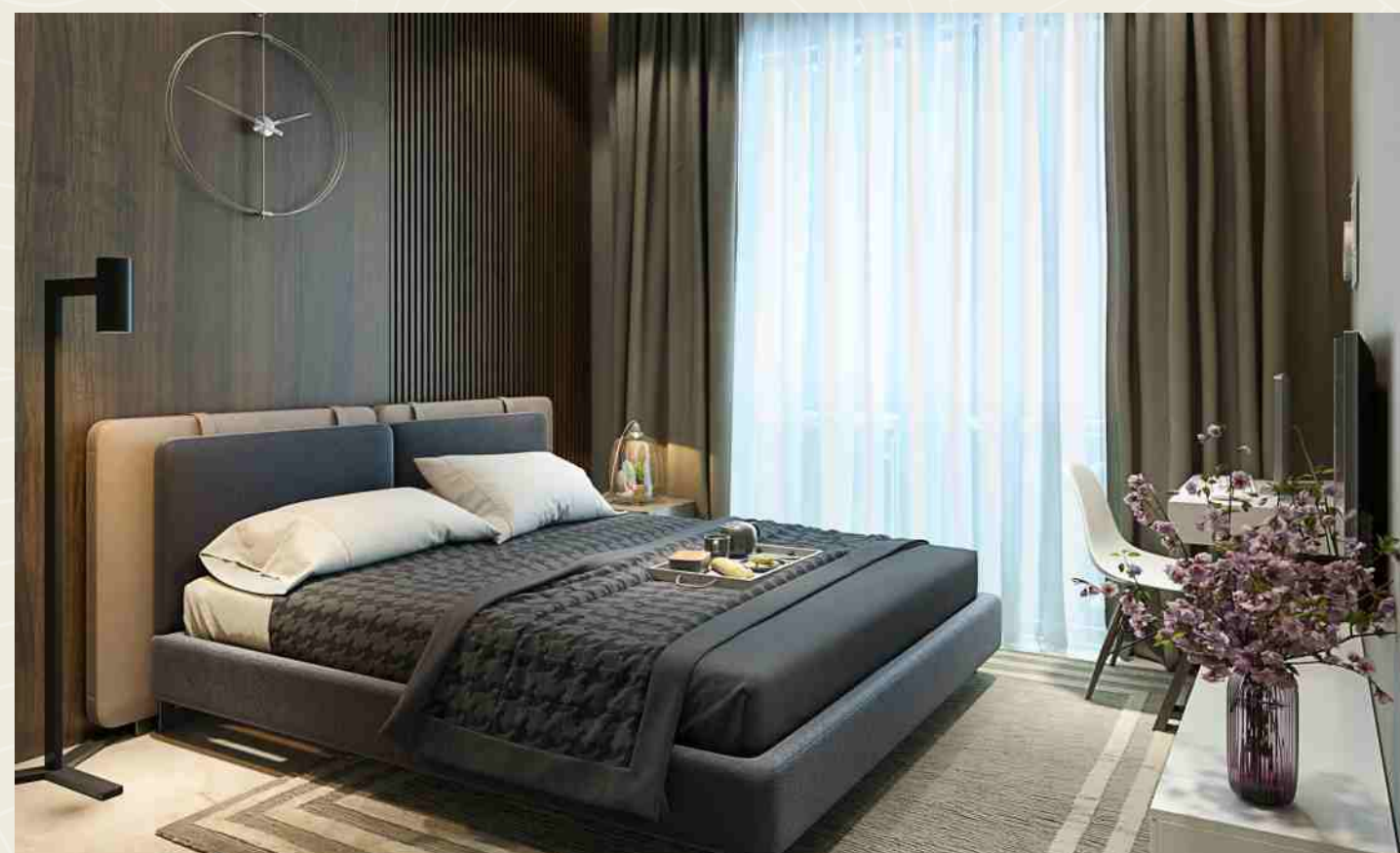


Grandiose Living

The enviable interiors of Florence Heights have been envisioned to combine opulence and comfort. These interiors blend aesthetic architectural choices with the utility of modern design to give you a beautiful and efficient home.

Internal Amenities:

- Elegant & gorgeous entrance lobby.
- Elegant Granite Tile Flooring In Entire Flat.
- Granite kitchen platform with Designer Sink & dado glaze tiles up to window top level.
- Concealed plumbing & modern fittings in toilets.
- Concealed electrical copper wiring with decorative modular switches & MCB system.
- Granite frame in each window.
- Decorative flush main door with brass fittings.
- Intercom facility in each flat.
- Telephone & Internet Point in all Flat
- POP/ Gypsum Finish internal wall with acrylic emulsion plastic paint.
- Good quality anodized aluminum sliding window.




Florence Heights
HAPPINESS FOREVER





Terrace Lounge

The myriad rooftop amenities at Florence Heights are the throbbing heart of the society. The meticulously crafted amenities here have something for everyone, from kids to the senior citizens.

The terrace lounge offers you the perfect start to each day with the early morning breeze. It also acts as the perfect spot to relax after a long day and indulge in comforting conversations with the backdrop of a good view.



Gazebo



Lawn Area



Jogging Track



Yoga & Meditation Zone





Florence Heights

HAPPINESS FOREVER

A well-balanced lifestyle is the key to happiness and fitness is one of the most overlooked facets of our busy modern lives. With the fully-equipped gymnasium at Florence Heights you can make fitness a part of your routine and reclaim your health.



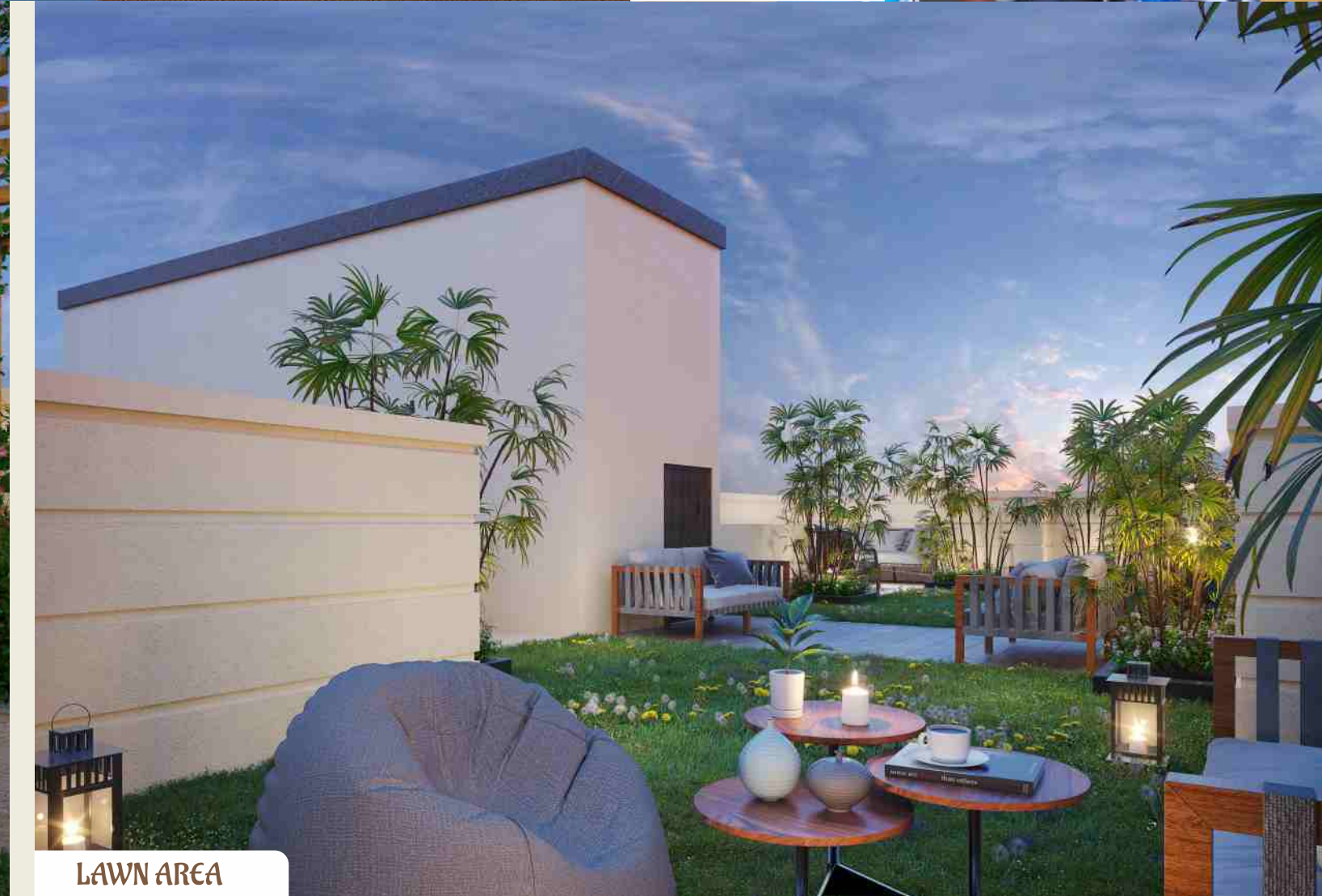
KIDS PLAY AREA



FITNESS CENTER



GAZEBO SEATING



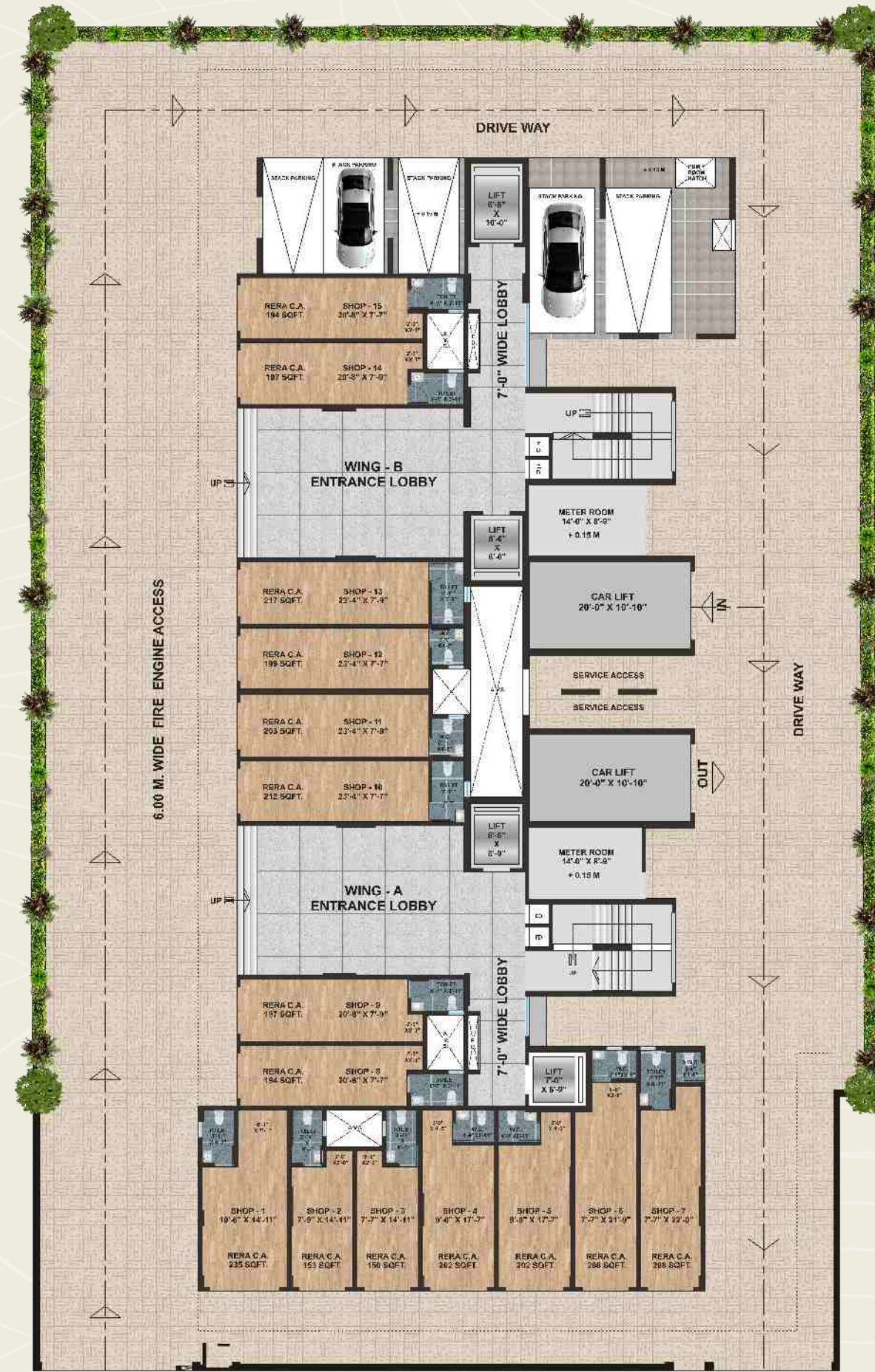
LAWN AREA



WING - A	
FLAT NO.	RERA C.A SQFT
FLAT NO 1	507
FLAT NO 2	366
FLAT NO 3	363
FLAT NO 4	364
FLAT NO 5	364

WING - B	
FLAT NO.	RERA C.A SQFT
FLAT NO 1	364
FLAT NO 2	364
FLAT NO 3	363
FLAT NO 4	366
FLAT NO 5	509

Typical Floor Plan



SHOP	
SHOP NO.	RERA C.A SQFT
SHOP 1	235
SHOP 2	153
SHOP 3	150
SHOP 4	202
SHOP 5	202
SHOP 6	208
SHOP 7	208
SHOP 8	194
SHOP 9	197
SHOP 10	212
SHOP 11	203
SHOP 12	199
SHOP 13	217
SHOP 14	197
SHOP 15	194

Ground Floor Plan

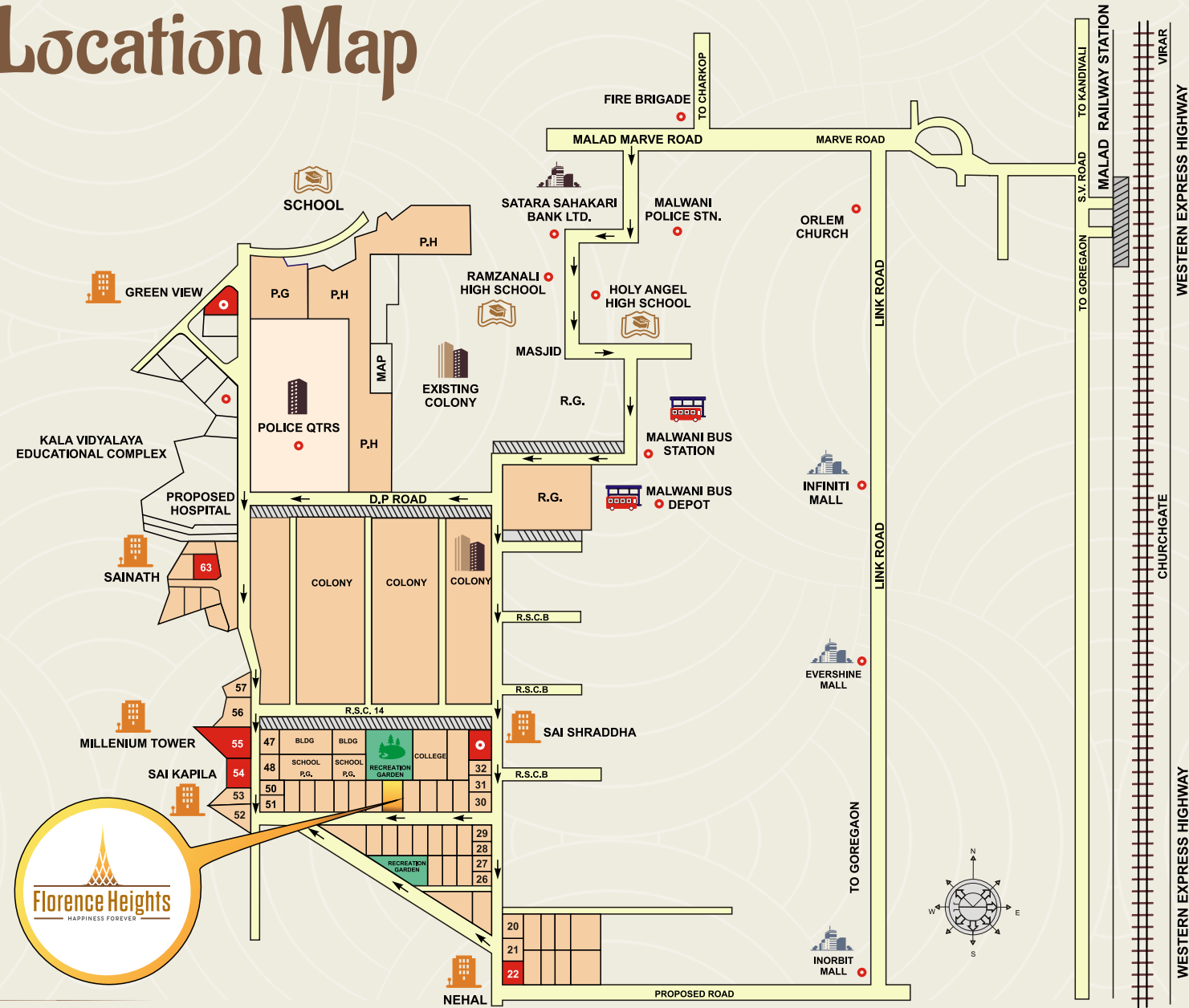


1 BHK
TYPE A



2 BHK
TYPE B

Location Map



The most important aspect of Mumbai's lifestyle is the ease with which one can travel.

Located in the heart of Malad at Malwani, Florence Heights offers you seamless connectivity to the rest of the city via the Malad Railway Station, SV Road and the Western Express Highway. Key recreational sites and places of necessity such as schools, colleges, hospitals, banks and corporate hubs are all in close proximity to Florence Heights. Malwani truly encapsulates all your wants and needs in one enthralling locale.

Location Advantages:



Share Rickshaw/Taxi
Immediately Available



Bus Depot
0.5 Kms.



Super Markets



Linking Road
3 Kms.



Metro Station
3 Kms.



Proposed
Coastal Road

